

Cessna 150, 152 and A152 Series - Elevator Bellcrank and Bracket Assembly

11 August 2020

Issued by the Civil Aviation Authority of New Zealand in the interests of aviation safety. A Continuing Airworthiness Notice (CAN) is intended to alert, educate, and make recommendations to the aviation community. A CAN contains non-regulatory information and guidance that does not meet the criteria for an Airworthiness Directive (AD). The inspections and practices described in this CAN must still be carried out in accordance with the applicable NZCAR Parts 21, 43 and 91 - CAN numbering is by ATA Chapter followed by a sequential number for the next CAN in that ATA Chapter.

Applicability:

Cessna 150, 152 and A152 series, all S/N.

Purpose:

This Continuing Airworthiness Notice (CAN) is revised to expand the applicability and bring attention to cracks found in the elevator bellcrank assembly brackets P/N 0411289-1 and P/N 0411290 on a second Cessna A152 aeroplane.

Background:

During a 100-hour inspection on a Cessna A152, cracks were found in brackets P/N 0411289-1 and P/N 0411290. These brackets are part of the elevator bellcrank and bracket assembly located below floor level in the forward cockpit area. For further details refer to Figure 25 in the Cessna 152 and A152 Parts Catalogue and the two photos provided in this CAN.

Recommendation:

The CAA strongly recommends a detailed visual inspection of the elevator bellcrank and bracket assembly located below floor level in the forward cockpit area for any defects, corrosion and cracks at every 100 hour/annual control system inspection.

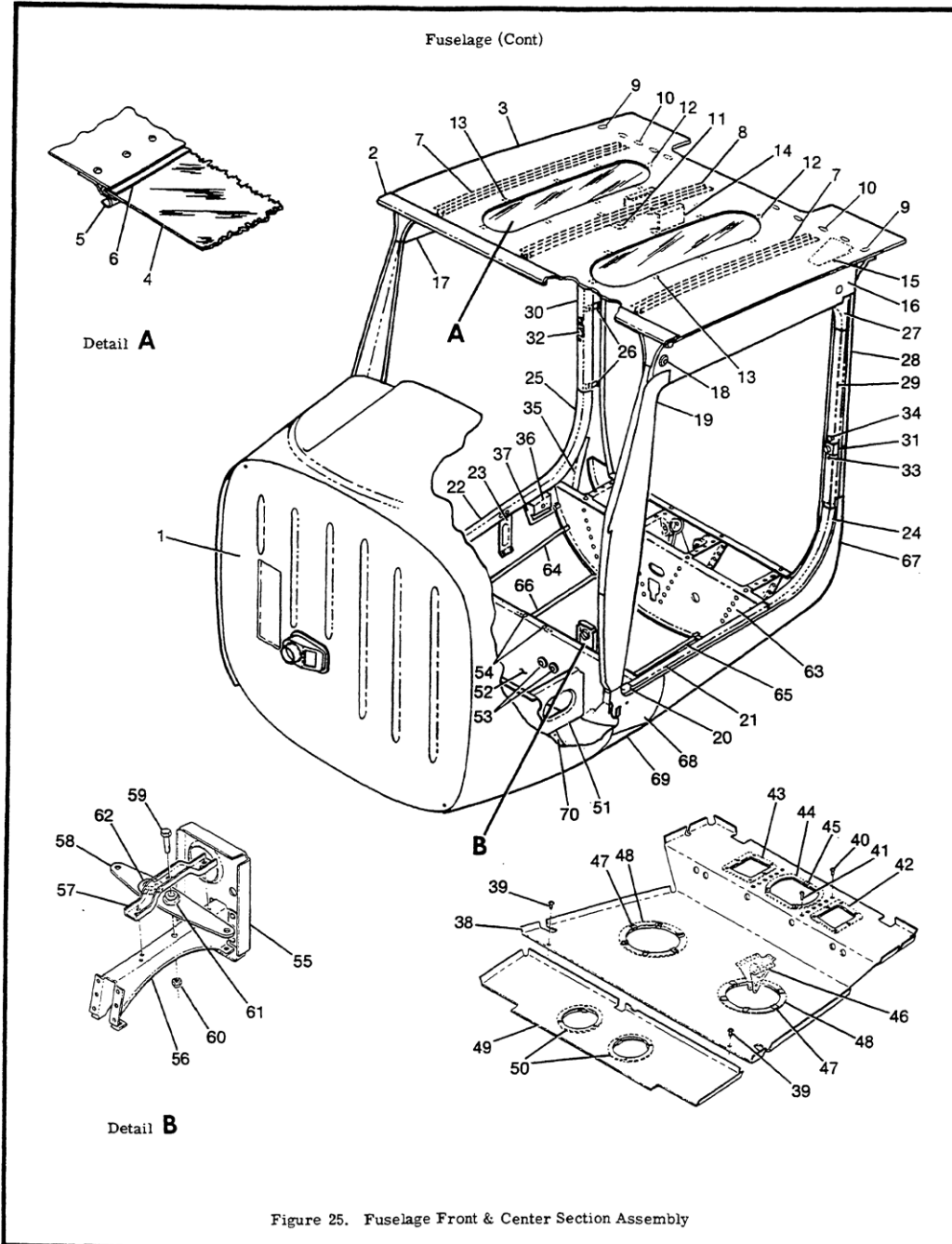
For the purpose of this CAN, a detailed inspection is: 'An intensive examination of an assembly or part to detect damage, failure or irregularity. Available lighting is normally supplemented with a direct source of good lighting at an intensity deemed appropriate. Inspection aids such as mirror, magnifying lenses etc. may be necessary. Surface cleaning may be required.'

Note:

If any defects are found, then complete a CA005D Defect Report form and submit the completed form to the CAA at CA005@caa.govt.nz or report findings via the online reporting system available at <https://occurrences.caa.govt.nz/ProdUI/>

Please include details of findings and include any other relevant technical information. Defect report forms can be obtained from <https://www.aviation.govt.nz/about-us/forms/Filter/?SearchTerm=&Rule=8>

152 & A152 Parts Catalog



98

Figure 25 in the Cessna 152 and A152 Parts Catalogue.
For the location of the elevator bellcrank and bracket assembly refer to Detail B in the figure.



Photo 1: Elevator Bellcrank and Bracket Assembly - Cracks found in upper bracket P/N 0411290 and lower bracket P/N 0411289-1.



Photo 2: Elevator Bellcrank and Bracket Assembly - Cracks found in upper bracket P/N 0411290.