



WELLINGTON NEW ZEALAND

PURSUANT to Section 28 of the Civil Aviation Act 1990

I, JENNIFER MARY SHIPLEY, Minister of Transport,

HEREBY MAKE the following ordinary rules.

SIGNED AT Wellington

This 2nd day of December 1997

by **JENNIFER MARY SHIPLEY**

Minister of Transport

Civil Aviation Rules

Part 1, Amendment 11

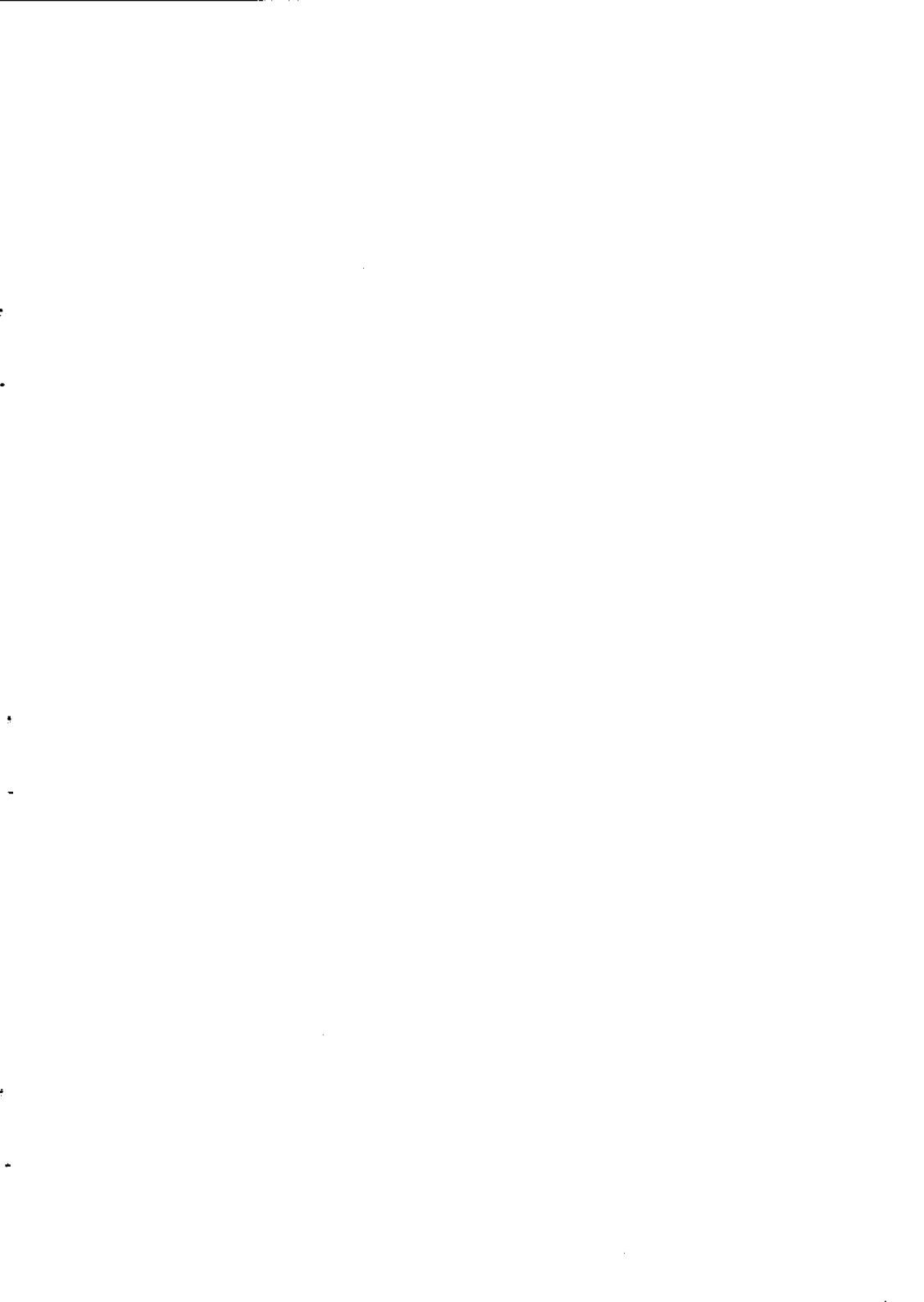
Docket Nr. 1037 and 1106

Civil Aviation Rules
Part 1, Amendment 11

**RULE OBJECTIVE, EXTENT OF CONSULTATION
AND COMMENCEMENT**

The objective of Part 1, Amendment 11 is to bring into force the definitions that result from the coming into force of Parts 71 and 73. Consultation regarding the definitions was conducted as part of the Parts 71 and 73 consultation process.

Part 1, Amendment No. 11 comes into force 28 days after notification in the Gazette.



Part 1 Amendment 11

1.1 General Definitions

1.1 is amended by inserting after the definition of air traffic, the following definition:

“Air traffic advisory service means a service provided within class F airspace to ensure separation, as far as practical, between aircraft that are operating on IFR flight plans:”

1.1 is amended by inserting after the definition of contaminated, the following definition:

“Control area means a controlled airspace extending upwards from a specified limit above the earth to a specified limit:”

1.1 is amended by inserting after the definition of general aviation area, the following definition:

“Geographical co-ordinates mean latitude and longitude that are expressed relative to the geodetic reference datum of the World Geodetic System 1984:”

1.1 is amended by inserting after the definition of New Zealand aeronautical information publication, the following definition:

“New Zealand Air Navigation Register means the New Zealand Air Navigation Register established under 71.5:”

1.1 is amended by inserting after the definition of repair, the following definition:

“Reporting point means a specified geographical location in relation to which the position of an aircraft can be reported:”